

What is (E)JES?



(E)JES is a system management tool that provides you with information to monitor, manage, and control your JES2 and/or JES3 z/OS® JESplex.

With (E)JES, you can:

- Control job processing (hold, release, cancel, and purge jobs)
- Monitor jobs while they are running
- Browse jobs without printing (both textual and graphical output)
- Control JESplex parameters, JES-managed initiators (JES2), job classes, and job class groups (JES3)
- Control printers, punches, functional subsystems, and NJE nodes
- Control your JES spool configuration
- Control WLM scheduling environments and resources
- Control WLM enclaves and z/OS UNIX processes
- Control the z/OS Health Checker
- Issue system commands that affect jobs

(E)JES consists of panels that provide immediate and current information about jobs, printers, queues, and resources in a z/OS JESplex. With (E)JES, you can easily access

(E)JES Menu

```
Jobs Resources Devices Tools Filter View Options Help
2005/07/21 (2005.202) (E)JES Menu V4R2.0 15:38
Command ==>
Default Command ==>

ACtivity System activity Class Job classes
Hold Hold queue INIT Initiators
Input Input queue JESplex JESplex members
Output Output queue LIne Lines
PStatus DMVS processes Nde Nodes
SStatus Status of jobs PRinter Printers and punches
SPVol Spool volumes

ENClave Enclaves
HCheck Health checker DUmp Spool control blocks
LOG System log ULOG User session log
RESDurce WLM resources OPTions Session options
SCHenv Scheduling environments
SYSReq System requests

F1=Help F2=Split F3=Exit F4=Return F6=Book F7=Backward
F8=Forward F9=Swap F10=Actions F12=Cancel
```

and modify all attributes for jobs, started tasks, TSO users, APPC/MVS transaction jobs, and processes running under Unix System Services residing anywhere in your JESplex. Simple commands and rapid accessibility not only save you time, but also make interaction with your JES subsystems easy.

Benefits of Using (E)JES

Improved Job Management

(E)JES provides an easy way to manage jobs in your spool. It gives immediate, up-to-date information, such as:

- The status, class, priority, date, and time of a specific job
- All jobs on a specific queue, such as the input, hold, or output queues
- Details for a job no matter where it is in the JESplex
- Reasons a job is delayed
- Output from a job as it is created no matter where the job is running in the JESplex

Improved Output Management

(E)JES displays detailed information about output that is ready to be printed, including:

- The total number of lines to be printed
- Classes the output is assigned to
- Forms needed for printing
- Date the output was created

Improved Device Control

With (E)JES, you have a single interface to some of the most important devices on your system.

- Control local and remote printers and punches
- Control functional subsystems
- Control spool partitions and volumes

CLASS	PHXHQ2	Class	Status	Row	1 of 38				
A	WLM	0	2	0	*	NO VERIFY	YES	1,1	
B	JES	0	0	0	*	WRITE,WRITE	NO VERIFY	YES	1,1
C	WLM	0	0	0	*		NO VERIFY	YES	1,1
D	WLM	0	0	0	*		NO VERIFY	YES	1,1
E	WLM	0	0	0	*		NO VERIFY	YES	1,1
F	WLM	0	0	0	*		NO VERIFY	YES	1,1
G	WLM	0	0	0	*		NO VERIFY	YES	1,1
H	WLM	0	0	0	*		NO VERIFY	YES	1,1
I	WLM	0	0	0	*		NO VERIFY	YES	1,1
J	WLM	0	0	0	*		NO VERIFY	YES	1,1
K	WLM	0	0	0	*		NO VERIFY	YES	1,1
L	WLM	0	0	0	*		NO VERIFY	YES	1,1
M	WLM	0	0	0	*		NO VERIFY	YES	1,1
N	WLM	0	0	0	*		NO VERIFY	YES	1,1
O	WLM	0	0	0	*		NO VERIFY	YES	1,1
P	WLM	0	0	0	*		NO VERIFY	YES	1,1
Q	WLM	0	0	0	*		NO VERIFY	YES	1,1
R	WLM	0	0	0	*		NO VERIFY	YES	1,1
S	WLM	0	0	0	*		NO VERIFY	YES	1,1
T	WLM	0	0	0	*		NO VERIFY	YES	1,1
U	HELD	JES	0	0	*	KEEP,KEEP	NO VERIFY	YES	1,1
V	WLM	0	0	0	*		NO VERIFY	YES	1,1
W	WLM	0	0	0	*		NO VERIFY	YES	1,1
X	WLM	0	0	0	*		NO VERIFY	YES	1,1

Job Classes

Improved Resource Management

(E)JES provides an effective way to manage resources.

- Control and manage JESplex parameters, JES-managed initiators (JES2), job classes, and job class groups (JES3)
- Control NJE nodes
- Control and manage WLM resources
- Control WLM enclaves and z/OS UNIX processes
- Control the z/OS Health Checker
- Control and manage system requests
- Reduce problem management time
- Issue system commands

User Access Control

You can tailor (E)JES to meet the needs of your users and your security requirements. You can control:

- Who can use (E)JES
- Which users can issue (E)JES control commands
- Which users can issue system commands
- For which jobs users can issue commands
- Which columns to display on panels
- Which jobs and output to display on panels

You can implement these controls internally or through the SAF and an external program, such as CA-Top Secret® or RACF®.

Workstation Component

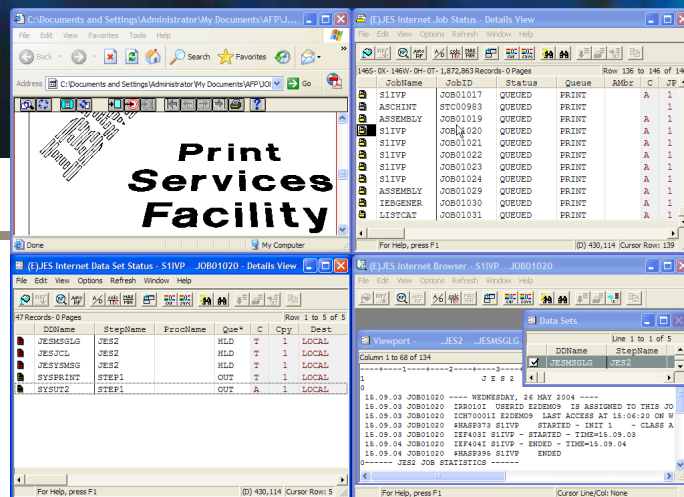
(E)JES has a client/server, object-oriented user interface for managing your z/OS JESplex from a personal computer.

Communicating directly with the mainframe, (E)JES takes robust functionality, previously available only to 3270 users, and integrates it with powerful, easy-to-use, standard workstation interfaces to create a best-of-both-worlds solution.

Some Important Features

- (E)JES allows users to manage multiple z/OS servers simultaneously. Servers can be JES2, JES3, or a combination of both. (E)JES maintains a common management interface.
- (E)JES lets you maintain system integrity via your existing security definitions.
- (E)JES employs a familiar point-and-shoot interface, allowing your users to be productive immediately.
- (E)JES seamlessly integrates the functions of IBM's ISPF client/server product to provide a complete workstation development environment. All of the power of ISPF is available without the traditional need for a TSO/E address space.

Visit us at <http://www.phoenixsoftware.com> to learn more about our products and download a free trial of (E)JES.



Multitasking Windows



Phoenix Software International (PSI) was formed in 1978 and is one of the world's leading systems software development companies. PSI offers a suite of software utilities operating on IBM and compatible mainframes and workstations.

PHOENIX SOFTWARE INTERNATIONAL

5200 West Century Blvd., Suite 800
Los Angeles, CA 90045
TEL (800) 622-9292 or (310) 338-0400
FAX (310) 338-0801

The "P" logo and (E)JES are registered trademarks of Phoenix Software International.

IBM, RACF, z/OS and OS/390 are registered trademarks of the International Business Machines Corporation.

CA-Top Secret is a registered trademark of Computer Associates International, Inc.

Unix is a registered trademark of The Open Group.

All other trademarks are acknowledged and respected.

© Copyright 2004 Phoenix Software International, Inc.